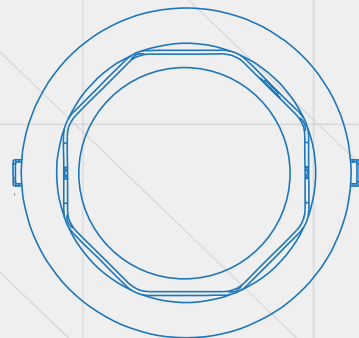
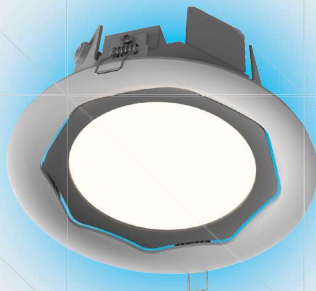


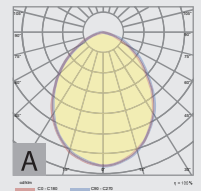


TEMPUS

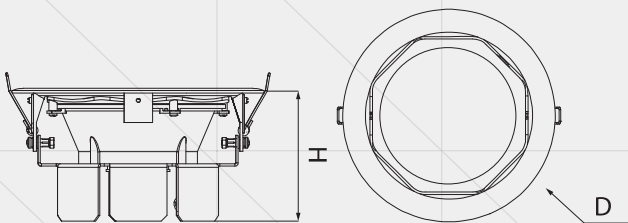
Why **TEMPUS** luminaire are suitable for indoors lighting? Simply because it is a downlight which allows precise light distribution. They are suitable in administration office buildings or public places such as schools, shops, hotels.



TEMPUS



- Installation: Conference rooms, office lighting
- Colour temperature: warm, neutral, cold
- Colour rendering index: CRI > 80
- Ingress protection: IP20/IP54
- Power supply: 230 V / 50 Hz
- Safety class: II
- Operating temperature: max. + 40°C
- Light distribution: A

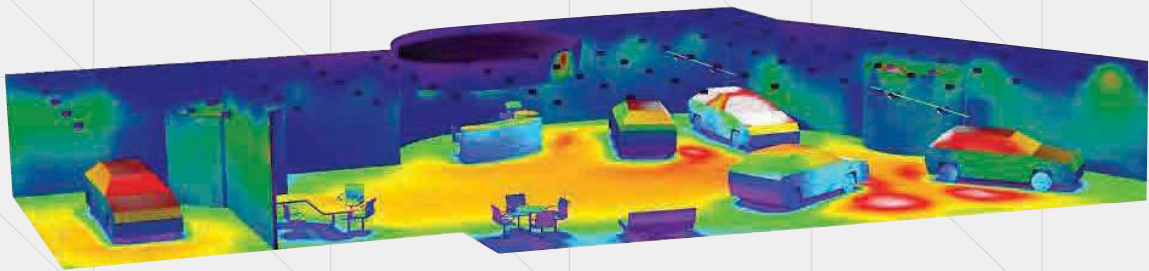


| Code | Nominal power | Diffuser | Luminous flux | Dimensions; Weight (D x H);(kg) | Observations |
|--------------|---------------|-------------|---------------|--|----------------------------------|
| RS 81511-001 | 23 W | matte PMMA | 2200 lm | 220 x 118 mm 1,8 kg | emergency lighting kit: 60 min. |
| RS 81523 A2 | 20 W | matte PMMA | 2240 lm | 220 x 118 mm 1,6 kg | - |
| RS 81523-005 | 23 W | matte PMMA | 2240 lm | 220 x 118 mm 1,8 kg | emergency lighting kit: 180 min. |
| RS 81523-006 | 14 W | PMMA lenses | 1100 lm | 220 x 118 mm 2,0 kg | Bluetooth dimmable |

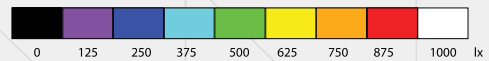
Compliance standards :
 SR EN 60598-1:2015+AC:2016
 SR EN 60598-2-1:2001
 SR EN 62031:2009+A1:2013+
 A2:2015
 SR EN 55015:2014+A1:2015
 SR EN 61000-3-2:2015
 SR EN 61000-3-3:2014
 SR EN 61547:2010



TEMPUS



Height of space: 3,470 m
 Maintenance factor : 0.90



| Surface | p [%] | Em [lx] | Emin [lx] | Emax [lx] | u0 |
|----------------|-------|---------|-----------|-----------|-------|
| Usable surface | / | 728 | 170 | 1494 | 0.233 |
| Floor | 10 | 545 | 37 | 988 | 0.067 |
| Ceiling | 70 | 176 | 53 | 451 | 0.300 |
| Walls | 85 | 323 | 78 | 2207 | / |