

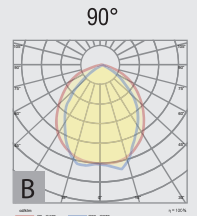
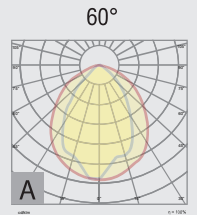
MAIA

MAIA is a linear luminaire, used for industrial or shopping centers lighting, which can be mounted both suspended and apparent.



MAIA

- Installation: Industrial lighting, shopping centers
- Colour temperature: warm, neutral, cold
- Colour rendering index: CRI > 80
- Ingress protection: IP20
- Power supply: 230 V / 50 Hz
- Safety class: I
- Operating temperature range: +5 . . . + 40°C
- Emergency lighting: battery autonomy - 60 min

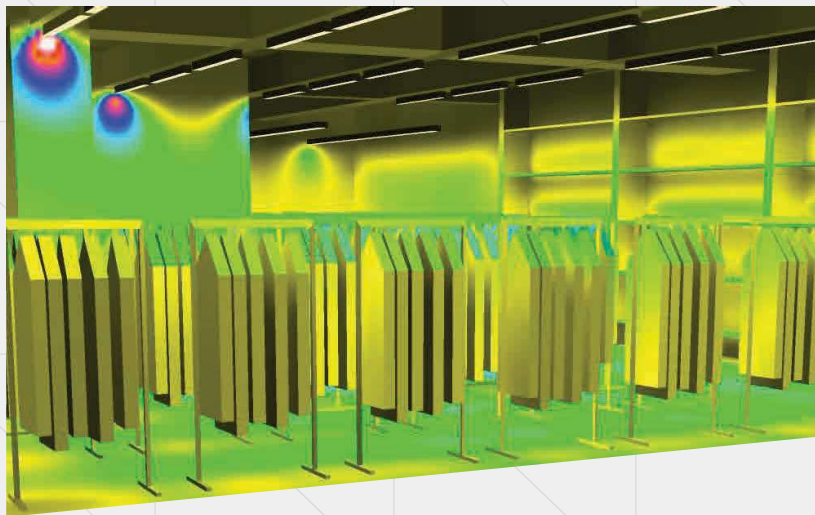


Code	Nominal power	Diffuser	Luminous flux	Light distribution	Dimensions; Weight (L x W x H);(kg)	Observations
RS 82083-006	74 W	lens	10600 lm	A	1722x 73 x 83 mm 2,0 kg	-
RS 82083-008	74 W	lens	10600 lm	B	1722 x 73 x 83 mm 2,0 kg	-
RS 82083-009	74 W	lens	10600 lm	B	1722 x 73 x 83 mm 2,0 kg	dimnable
RS 82083-014	78 W	lens	10600 lm	A	1722 x 73 x 83 mm 2,0 kg	LiFePO4 batteries 3,2 Vcc / 3,0 Ah
RS 82083-019	74 W	lens	10600 lm	B	1810 x 70 x 81 mm 2,5 kg	-
RS 82083-022	78 W	lens	10600 lm	A	1722 x 73 x 83 mm 2,5 kg	LiFePO4 batteries 3,2 Vcc / 3,0 Ah
RS 82083-029	78 W	lens	10600 lm	B	1722 x 73 x 83 mm 2,5 kg	LiFePO4 batteries 3,2 Vcc / 3,0 Ah

Compliance standards:
 SR EN 60598-1:2015+AC:2016
 +A1:2018
 SR EN 60598-2-22:2015
 +AC:2015+AC:2016
 SR EN 60598-2-1:2001
 SR EN 62031:2009+A1:2013+
 A2:2015
 SR EN 55015:2014+A1:2015
 SR EN 61000-3-2:2015
 SR EN 61000-3-3:2014
 SR EN 61547:2010



MAIA



Height of space: 3,470 m
 Maintenance factor : 0.90



Surface	ρ [%]	E_m [lx]	E_{min} [lx]	E_{max} [lx]	u_0
Usable plan	/	570	105	911	0.184
Floor	50	463	101	763	0.218
Ceiling	70	70	33	119	0.479
Walls	50	241	39	2880	/