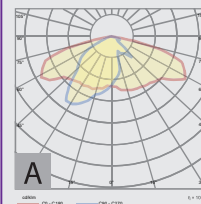




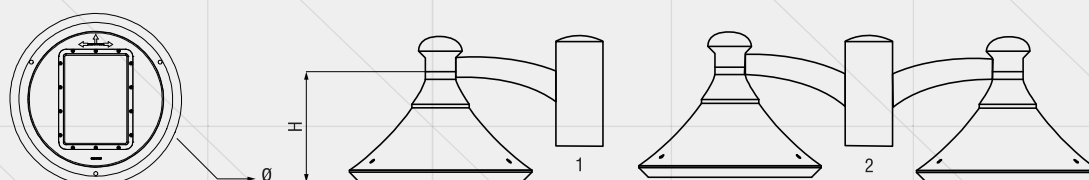
## LEOS

LEOS LED luminaire is the right solution for street lighting in pedestrian areas, alleys, parks and individual lenses with application specific distribution.

# LEOS



- Installation: Pedestrian lighting, alleys, parks
- Colour temperature: warm, neutral, cold
- Colour rendering index: CRI > 80
- Ingress protection: IP66
- Power supply: 230 V / 50 Hz
- Safety class: I
- Light distribution: A
- Operating temperature: max. + 45°C
- Pipe mounting: Ø 48 - 60



Code	Nominal power	Diffuser	Luminous flux	Dimensions; Weight ( $\varnothing \times H$ ); ( kg )	Luminaire type	Observations
RS 82015-005	30 W	transparent diffuser / PMMA lens	4030 lm	$\varnothing 480 \times 310$ mm 3 kg	1	-
RS 82015-003	2 x 30 W	transparent diffuser / PMMA lens	2 x 4030 lm	2 x ( $\varnothing 480 \times 310$ mm) 8 kg	2	-

Compliance standards :  
 SR EN 60598-1:2015  
 +AC:2016  
 SR EN 60598-2-3:2004  
 +A1:2012  
 SR EN 62031:2009+A1:2013  
 +A2:2015 art. 13.2 si 15  
 SR EN 55015:2014+A1:2015  
 SR EN 61000-3-2:2015  
 SR EN 61000-3-3:2014  
 SR EN 61547:2010



## LEOS

### Calculation area list

Evaluation field: Street 1  
Length: 35.000 m, Width: 7000 m  
Raster: 12 x 6 Points  
Attached street elements: Street 1.  
Covering: R3, q0: 0.070  
Selected illumination class: ME4

(All photometric requirements are met.)

Lm [cd/m <sup>2</sup> ]	U0	UI	TI [%]	SR
1.02	0.71	0.73	8	1.08
≥ 1.00	≥ 0.40	≥ 0.50	≤ 15	≥ 0.50
✓	✓	✓	✓	✓

Calculated values:  
Necessary values according to class:  
Acquired/ Not acquired:



## LEOS

### Calculation area list

Evaluation field : Sidewalk 1  
Length: 35.000 m, Width: 3.000 m  
Raster: 12 x 3 Points  
Attached street elements: Sidewalk 1.  
Selected illumination class: S2

(All photometric requirements are met.)

E [lx]	E [lx]
13.74	5.73
≤ 10.00	≥ 3.00
✓	✓

Calculated values:  
Necessary values according to class:  
Acquired/ Not acquired: