

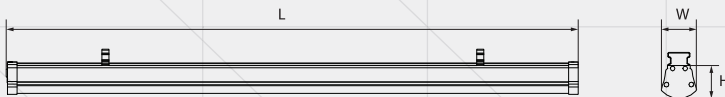
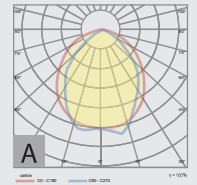
GAMMA

GAMMA is a linear luminaire, suitable for industrial lighting or shopping center lighting. They consist of one up to five modules and can be mounted either suspended or apparent. Optional may include an emergency kit.



GAMMA

- Installation: Shopping centers
- Colour temperature: warm, neutral, cold
- Colour rendering index: CRI > 80
- Ingress protection: IP65
- Power supply: 230 V / 50 Hz
- Safety class: I
- Operating temperature range: +5 . . . + 45°C
- Emergency lighting: battery autonomy - 60 min

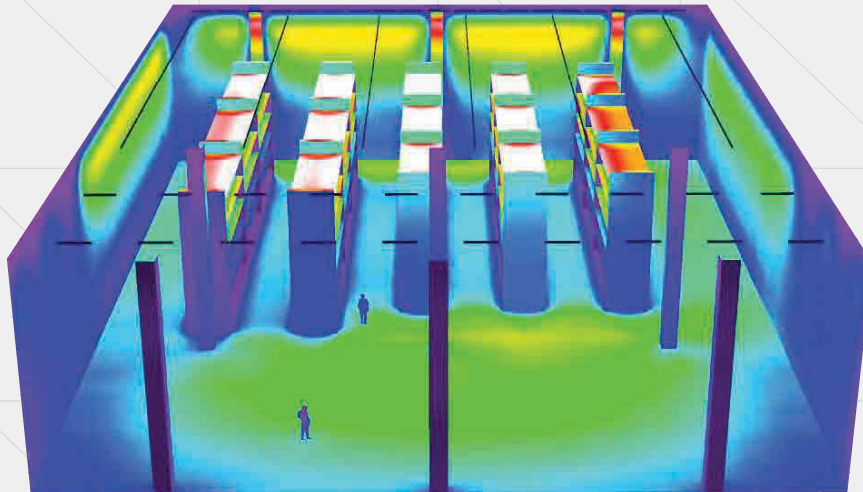
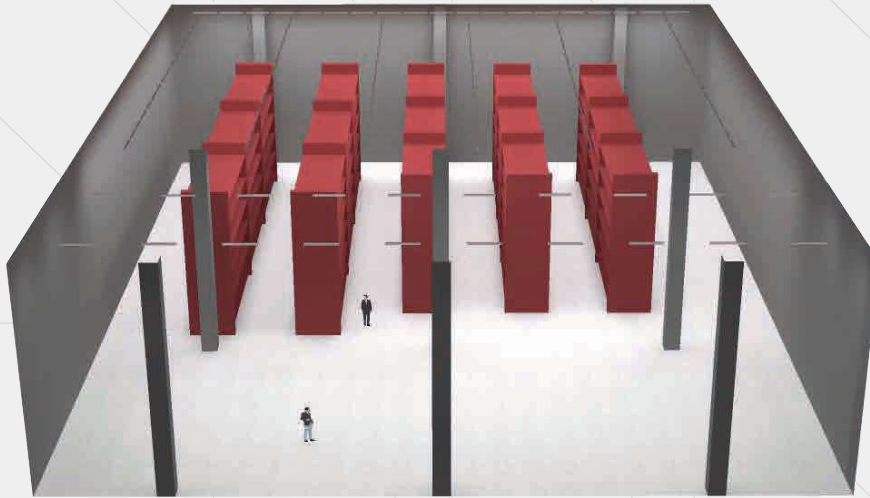


Code	Nominal power	Diffuser	Luminous flux	Dimensions; Weight (L x W x H);(kg)	Observations
RS 82070-002	40 W	transparent polycarbonate	6000 lm	1200 x 95 x 68 mm 1,3 kg	operating temperature range: -30°C ...+45°C
RS 82070-004	45 W	transparent polycarbonate	6000 lm	1200 x 95 x 70 mm 1,6 kg	Ni-Cd batteries 4,8 Vcc / 1,6 Ah
RS 82070-005	20 W	transparent polycarbonate	3000 lm	600 x 95 x 70 mm 0,8 kg	operating temperature range: -30°C ...+45°C
RS 82070-006	25 W	transparent polycarbonate	3000 lm	750 x 95 x 70 mm 0,9 kg	LiFePO4 batteries 3,2 Vcc / 3,0 Ah
RS 82070-007	50 W	transparent polycarbonate	7300 lm	1500 x 95 x 70 mm 1,5 kg	operating temperature range: -30°C ...+45°C
RS 82070-008	50 W	transparent polycarbonate	7400 lm	1500 x 95 x 70 mm 1,6 kg	LiFePO4 batteries 3,2 Vcc / 3,0 Ah
RS 82070-009	10 W	transparent polycarbonate	1350 lm	300 x 95 x 70 mm 0,5 kg	operating temperature range: -30°C ...+45°C

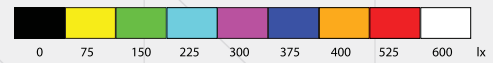
Compliance standards :
 SR EN 60598-1:2015+AC:2016
 SR EN 60598-2-1:2001
 SR EN 62031:2009+A1:2013+A2:2015
 SR EN 55015:2014+A1:2015
 SR EN 61000-3-2:2015
 SR EN 61000-3-3:2014
 SR EN 61547:2010



GAMMA



Height of space: 6.000 m
 Fitting height: 3.500 m
 Maintenance factor: 0.90



Surface	ρ [%]	E_m [lx]	E_{min} [lx]	E_{max} [lx]	u_0
Usable surface	/	512	60	1090	0.116
Floor	51	430	26	743	0.060
Ceiling	70	177	90	256	0.506
Walls	50	201	7.87	991	/