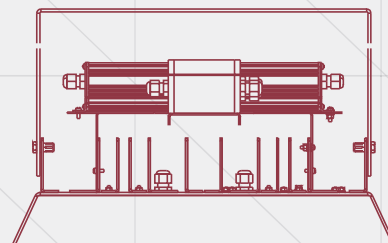




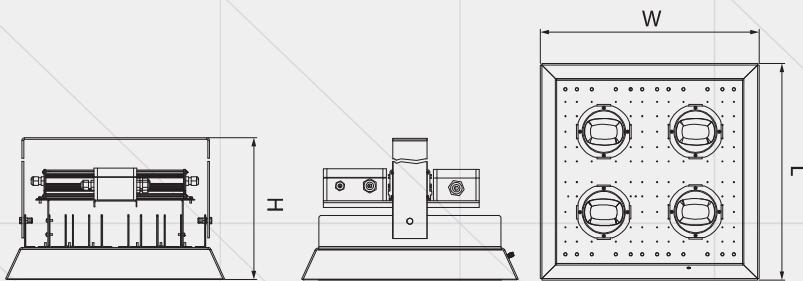
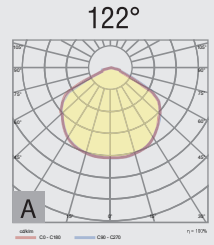
CETEX

This series of illuminators is perfect for industrial environment, especially because it has been designed for areas with potentially explosive atmosphere due to the presence of gas and dust. It can be fitted suspended and also applied on the ceiling or on the wall, having an adjustable position.



CETEX

- Installation: Gas station lighting
- Colour temperature: warm, neutral, cold
- Colour rendering index: CRI > 80
- Ingress protection: IP65
- Power supply: 230 V / 50 Hz
- Safety class: I
- Operating temperature range: - 30°C . . . + 45°C
- Light distribution: A



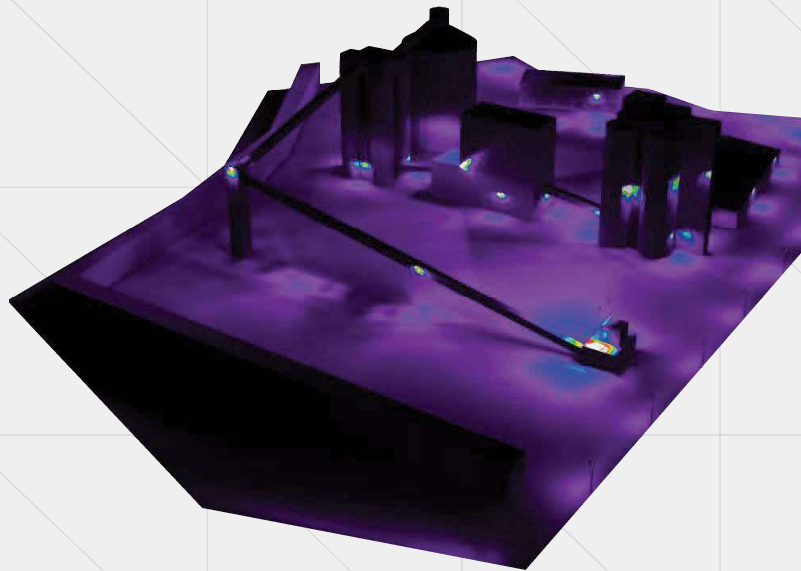
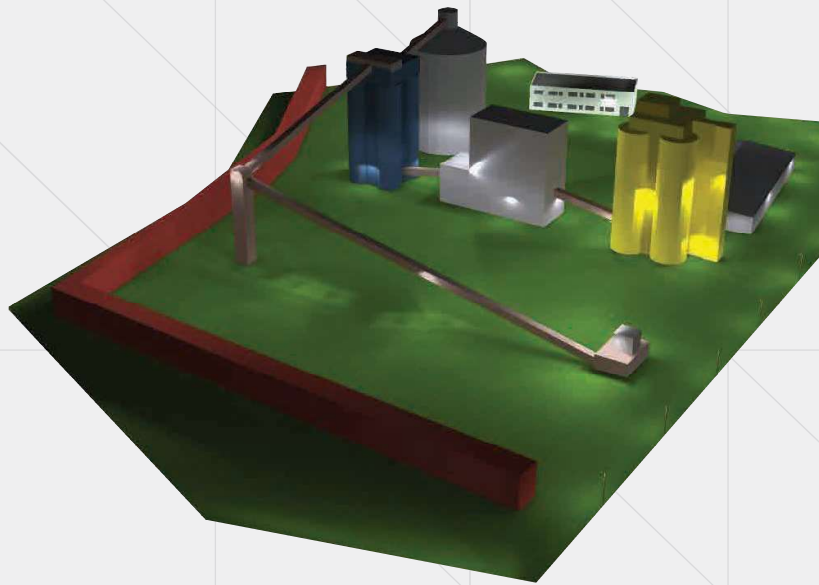
Code	Nominal power	Diffuser	Luminous flux	Dimensions; Weight (L x l x h);(kg)	Observations
RS 81951 A	140 W	polycarbonate	15700 lm	382 x 378 x 332 mm 7 kg	-
RS 81951 B	70 W	polycarbonate	8300 lm	378 x 225 x 332 mm 4,5 kg	-

Antiex

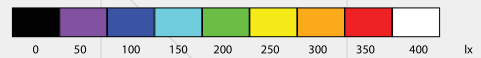
Lighting devices marked with antiex sign are designed for operation in risk of explosion areas (zone 2 protection level Gc gas group IIB, temperature class T4 max.100°, type of protection "nA" and "mc") and for risk of explosion due dust lighting, zone 22 with level of protection Dc- group IIIC (maximum surface temperature of 100 °) type of protection tc.

Compliance standards:
 SR EN 60598-1:2015+AC:2016
 SR EN 60598-2-5:2016
 SR EN 55015:2014+A1:2015
 SR EN 61000-3-2:2015
 SR EN 61000-3-3:2014
 SR EN 61547:2010
 SR EN 60079-0:2013
 SR EN 60079-15:2011
 SR EN 60079-31:2014





Height of space : 12.000 m
 Maintenance factor : 0.80



Surface	p [%]	Em [lx]	Emin [lx]	Emax [lx]	u0
Usable plan	/	226	20	328	0.089
Floor	20	221	26	306	0.117
Ceiling	70	65	26	112	/
Walls	50	134	41	4992	/