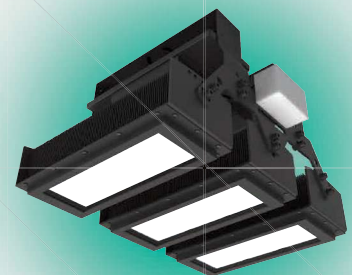
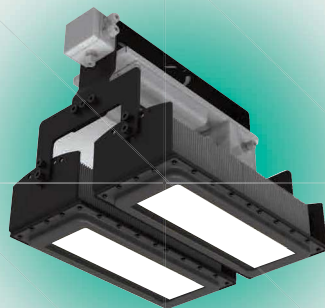
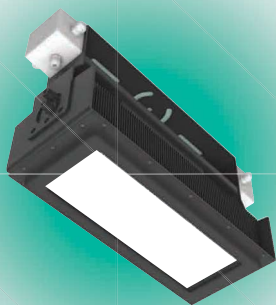




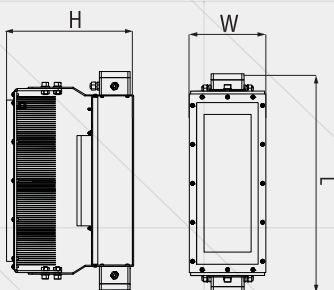
AQUILLA

AQUILLA luminaires have been specially designed for football stadium and sport grounds, areas that require strong lighting to carry out activities in the best conditions. These can be ordered in 1 or 3 module variants, depending on the application location.

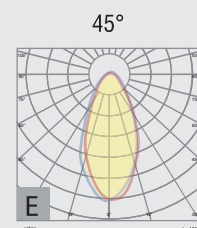
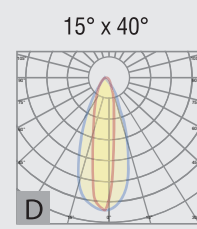
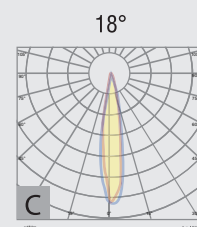
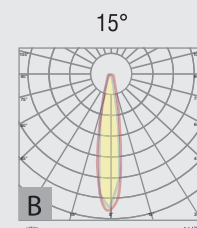
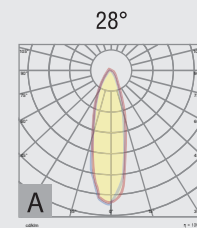


AQUILLA 1M

- Installation: Stadium, parking, tunnel, architectural lighting
- Colour temperature: 5700K
- Ingress protection: IP66
- Power supply: 230 V / 50 Hz
- Safety class: I
- Operating temperature range: - 30°C . . . + 45°C



Code	Nominal power	Diffuser	Luminous flux	Dimensions; Weight (L x W x H);(kg)	Light distribution	Observations
RS 82025-006	230 W	PMMA lens	21000 lm	534 x 311 x 186 mm 9 kg	A	dimnable; CRI < 90
RS 82025-007	230 W	PMMA lens	21800 lm	534 x 311 x 186 mm 9 kg	B	dimnable; CRI < 90
RS 82025-008	230 W	PMMA lens	21600 lm	534 x 311 x 186 mm 9 kg	C	dimnable; CRI < 90
RS 82025-009	230 W	PMMA lens	21280 lm	534 x 311 x 186 mm 9 kg	D	dimnable; CRI < 90
RS 82025-010	230 W	PMMA lens	19700 lm	534 x 311 x 186 mm 9 kg	E	dimnable; CRI < 90
RS 82025-016	230 W	PMMA lens	30000 lm	534 x 311 x 186 mm 9 kg	A	dimnable; CRI < 70
RS 82025-017	230 W	PMMA lens	29500 lm	534 x 311 x 186 mm 9 kg	B	dimnable; CRI < 70
RS 82025-018	230 W	PMMA lens	31430 lm	534 x 311 x 186 mm 9 kg	C	dimnable; CRI < 70
RS 82025-019	230 W	PMMA lens	30730 lm	534 x 311 x 186 mm 9 kg	D	dimnable; CRI < 70
RS 82025-020	230 W	PMMA lens	28480 lm	534 x 311 x 186 mm 9 kg	E	dimnable; CRI < 70
RS 82025-022	230 W	PMMA lens	24150 lm	534 x 311 x 186 mm 9 kg	A	dimnable; CRI < 80
RS 82025-023	230 W	PMMA lens	24000 lm	534 x 311 x 186 mm 9 kg	B	dimnable; CRI < 80
RS 82025-024	230 W	PMMA lens	24250 lm	534 x 311 x 186 mm 9 kg	C	dimnable; CRI < 80
RS 82025-025	230 W	PMMA lens	24100 lm	534 x 311 x 186 mm 9 kg	D	dimnable; CRI < 80
RS 82025-026	230 W	PMMA lens	23900 lm	534 x 311 x 186 mm 9 kg	E	dimnable; CRI < 80

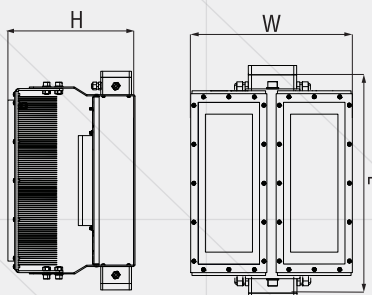


Compliance standards:
 SR EN 60598-1:2015+AC:2016
 SR EN 60598-2-1:2001
 SR EN 62031:2009+A1:2013+
 A2:2015
 SR EN 55015:2014+A1:2015
 SR EN 61000-3-2:2015
 SR EN 61000-3-3:2014
 SR EN 61547:2010

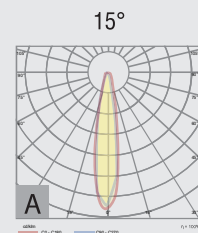


AQUILLA 2M

- Installation: Stadium, parking, tunnel, architectural lighting
- Colour temperature: 5700K
- Colour rendering index: CRI > 80
- Ingress protection: IP66
- Power supply: 230 V / 50 Hz
- Safety class: I
- Operating temperature range: - 30°C . . . + 45°C
- Light distribution: A



Code	Nominal power	Diffuser	Luminous flux	Dimensions; Weight (L x W x H);(kg)	Observations
RS 82025-027	2 x 240 W	PMMA lens	2 x 25000 lm	500 x 490 x 410 mm 18 kg	dimnable

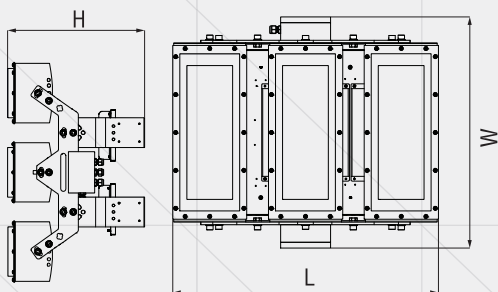


Compliance standards :
 SR EN 60598-1:2015+AC:2016
 SR EN 60598-2-1:2001
 SR EN 62031:2009+A1:2013+A2:2015
 SR EN 55015:2014+A1:2015
 SR EN 61000-3-2:2015
 SR EN 61000-3-3:2014
 SR EN 61547:2010

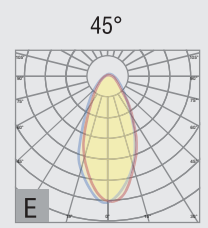
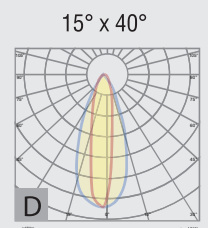
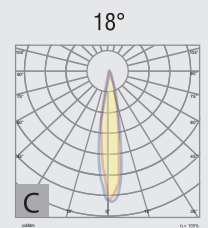
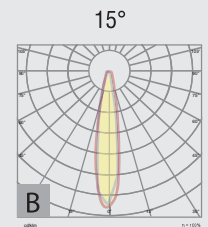
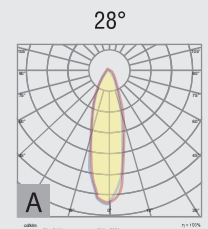


AQUILLA 3M

- Installation: Stadium, sport grounds
- Colour temperature: 5700K
- Ingress protection: IP66
- Power supply: 230 V / 50 Hz
- Safety class: I
- Operating temperature range: - 30°C . . . + 45°C



Code	Nominal power	Diffuser	Luminous flux	Dimensions; Weight (L x W x H);(kg)	Light distribution	Observation
RS 82025-001	3 x 230 W	lentile PMMA	3 x 21000 lm	643 x 580 x 415 mm 24 kg	A	dimnable; CRI < 90
RS 82025-002	3 x 230 W	lentile PMMA	3 x 21800 lm	643 x 580 x 415 mm 24 kg	B	dimnable; CRI < 90
RS 82025-003	3 x 230 W	lentile PMMA	3 x 21600 lm	643 x 580 x 415 mm 24 kg	C	dimnable; CRI < 90
RS 82025-004	3 x 230 W	lentile PMMA	3 x 21280 lm	643 x 580 x 415 mm 24 kg	D	dimnable; CRI < 90
RS 82025-005	3 x 230 W	lentile PMMA	3 x 19700 lm	643 x 580 x 415 mm 24 kg	E	dimnable; CRI < 90
RS 82025-011	3 x 230 W	lentile PMMA	3 x 30000 lm	643 x 580 x 415 mm 24 kg	A	dimnable; CRI < 70
RS 82025-012	3 x 230 W	lentile PMMA	3 x 29500 lm	643 x 580 x 415 mm 24 kg	B	dimnable; CRI < 70
RS 82025-013	3 x 230 W	lentile PMMA	3 x 31430 lm	643 x 580 x 415 mm 24 kg	C	dimnable; CRI < 70
RS 82025-014	3 x 230 W	lentile PMMA	3 x 30730 lm	643 x 580 x 415 mm 24 kg	D	dimnable; CRI < 70
RS 82025-015	3 x 230 W	lentile PMMA	3 x 28480 lm	643 x 580 x 415 mm 24 kg	E	dimnable; CRI < 70
RS 82025-002D	3 x 230 W	lentile PMMA	3 x 30000 lm	630 x 486 x 432 mm 25 kg	A	dimnable; CRI < 90
RS 82025-012D	3 x 230 W	lentile PMMA	3 x 30000 lm	630 x 486 x 432 mm 25 kg	B	dimnable; CRI < 70
RS 82025-021D	3 x 230 W	lentile PMMA	3 x 24000 lm	630 x 486 x 432 mm 25 kg	C	dimnable; CRI < 80



Compliance standards :
 SR EN 60598-1:2015+AC:2016
 SR EN 60598-2-1:2001
 SR EN 62031:2009+A1:2013+
 A2:2015
 SR EN 55015:2014+A1:2015
 SR EN 61000-3-2:2015
 SR EN 61000-3-3:2014
 SR EN 61547:2010

