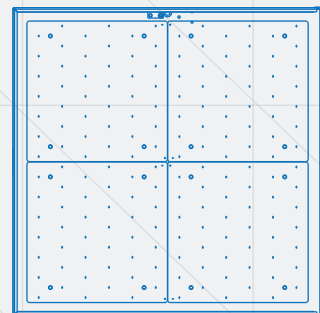
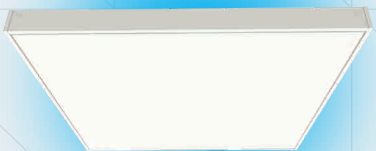
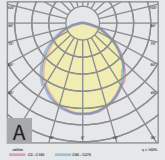




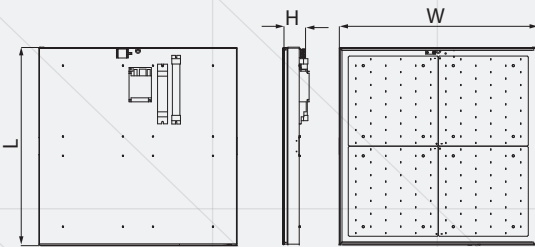
# ALCOR

**ALCOR** luminaire offer a minimalist design with an easy installation system for rooms with coffered ceiling. It's time to abandon 4x18 W fluorescent lamps and to choose **ALCOR** range!





- Installation: Shopping centers, offices, conference rooms
- Colour temperature: warm, neutral, cold
- Colour rendering index: CRI > 80
- Ingress protection: IP20
- Power supply: 230 V / 50 Hz
- Safety class: I
- Operating temperature range: + 5°C . . . + 40°C
- Light distribution: A
- Emergency lighting: battery autonomy - 60 min

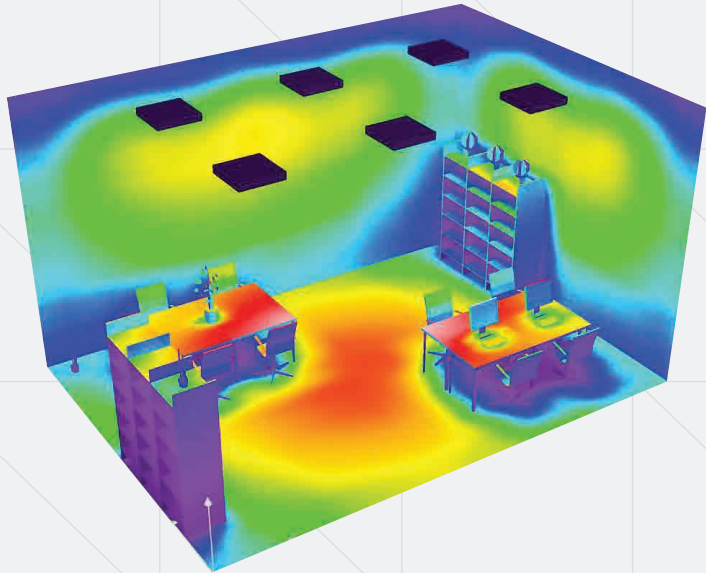


Code	Nominal power	Diffuser	Luminous flux	Dimensions; Weight ( L x W x H );( kg )	Observations
RS 81778-014	48 W	plexiglass	6250 lm	594 x 594 x 80 mm 4,4 kg	-
RS 81778-015	48 W	plexiglass	6250 lm	594 x 594 x 80 mm 4,4 kg	-
RS 81778-018	30 W	plexiglass	3900 lm	594 x 594 x 80 mm 4,4 kg	-
RS 81778-019	30 W	plexiglass	3900 lm	594 x 594 x 80 mm 4,4 kg	-
RS 81778-022	30 W	plexiglass	3900 lm	594 x 594 x 80 mm 4,2 kg	Bluetooth module
RS 81778-023	32 W	plexiglass	4200 lm	594 x 594 x 80 mm 4,2 kg	Ni-Cd batteries kit 4,8 V / 1,6 Ah
RS 81778-024	50 W	plexiglass	6500 lm	594 x 594 x 80 mm 4,2 kg	dimnable
RS 81778-025	30 W	plexiglass	3900 lm	594 x 594 x 50 mm 4,2 kg	connection to an emergency power supply
RS 81778-026	33 W	plexiglass	4300 lm	594 x 594 x 80 mm 4,2 kg	Ni-Cd batteries kit 4,8 V / 1,6 Ah
RS 81778-029	30 W	plexiglass	3900 lm	594 x 594 x 80 mm 5,4 kg	-
RS 81778-030	33 W	plexiglass	4300 lm	594 x 594 x 86 mm 5,5 kg	Ni-Cd batteries kit 4,8 V / 1,6 Ah
RS 81778-031	30 W	plexiglass	3900 lm	594 x 594 x 80 mm 5,4 kg	-
RS 81778-032	33 W	plexiglass	4200 lm	594 x 594 x 80 mm 4,3 kg	Ni-Cd batteries kit 4,8 V / 4,5 Ah

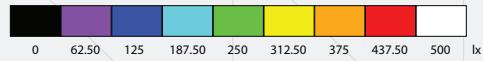
Compliance standards:

SR EN 60598-1:2015+AC:2016  
 SR EN 60598-2-1:2001  
 SR EN 60598-2-22:2015+  
 AC:2015+AC:2016  
 SR EN 62031:2009+A1:2013  
 SR EN 55015:2014+A1:2015  
 SR EN 61000-3-2:2015  
 SR EN 61000-3-3:2014  
 SR EN 61547:2010





Height of space: 3.000 m  
 Fitting height: 3.000 m  
 Maintenance factor : 0.90



Surface	p [%]	Em [lx]	Emin [lx]	Emax [lx]	u0
Usable surface	/	484	23	828	0.047
Floor	20	300	5.91	743	0.020
Ceiling	70	102	35	214	0.346
Walls	50	291	46	2030	/